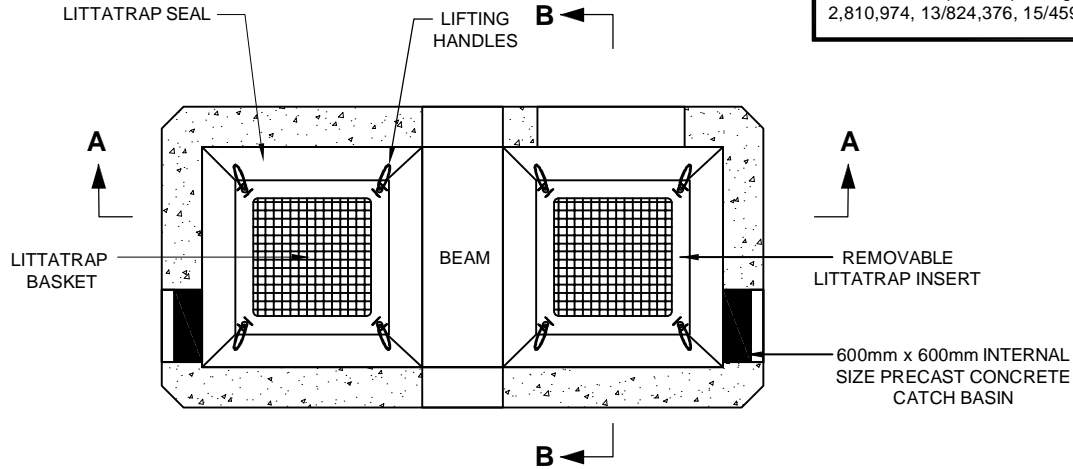
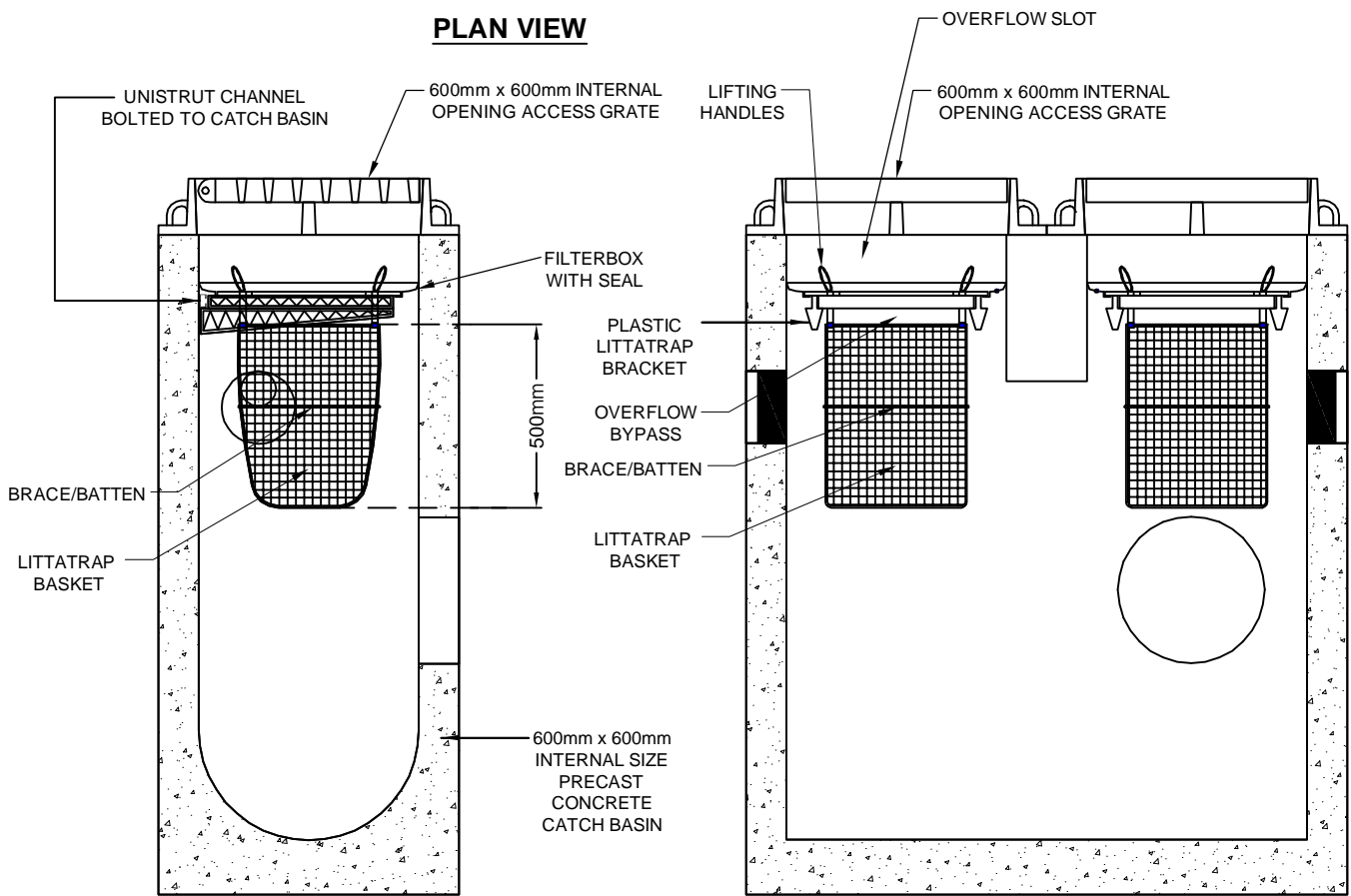


DRAWING NOT TO BE USED FOR CONSTRUCTION

THE "EnviroPod LittaTrap" is protected by one of the following Canadian, USA or International patent numbers and has other patents pending :
2,810,974, 13/824,376, 15/459,964, 2011302712, 588049



PLAN VIEW



SECTION A-A

SECTION B-B

NOTES:

1. Precast concrete catch basin in accordance with OPSD. Depth - 4.0 m maximum.
2. Available with Gross Trap installed. SEE TECHNICAL GUIDANCE.
3. Overall height is adjustable.
4. Outlet opening shown is 350mm diameter, will vary.
5. "Quick-Drain Connect" insert to accomodate subdrain connection. Location can vary if required.
6. 25mm weepholes can be added if required.
7. All dimensions in millimeters, unless otherwise shown.

LittaTrap™

THE DESIGN AND INFORMATION SHOWN ON THIS DRAWING IS PROVIDED AS A SERVICE TO THE PROJECT OWNER, ENGINEER AND CONTRACTOR BY IMBRIUM SYSTEMS ("IMBRIUM"). NEITHER THIS DRAWING NOR ANY PART THEREOF MAY BE USED, REPRODUCED OR MODIFIED IN ANY MANNER WITHOUT THE PRIOR WRITTEN CONSENT OF IMBRIUM. FAILURE TO COMPLY IS DONE AT THE USER'S OWN RISK AND IMBRIUM EXPRESSLY DISCLAIMS ANY LIABILITY OR RESPONSIBILITY FOR SUCH USE. IF DISCREPANCIES BETWEEN THE SUPPLIED INFORMATION UPON WHICH THE DRAWING IS BASED AND ACTUAL FIELD CONDITIONS ARE ENCOUNTERED AS SITE WORK PROGRESSES, THESE DISCREPANCIES MUST BE REPORTED TO IMBRIUM IMMEDIATELY FOR RE-EVALUATION OF THE DESIGN. IMBRIUM ACCEPTS NO LIABILITY FOR DESIGNS BASED ON MISSING, INCOMPLETE OR INACCURATE INFORMATION SUPPLIED BY OTHERS.



407 FAIRVIEW DR, WHITBY, ON L1N 3A9

CA 800-565-4801 INTL +1-416-960-9900

LITTATRAP
600mm x 1450mm
TWIN INLET
CATCH BASIN

DATE:##### SCALE: NTS

REV #	DATE	REVISION DESCRIPTION	BY	SHEET NUMBER
				1
				1 OF 1

PROJECT No.: ##### DRAWN: JSK CHECKED: BSF