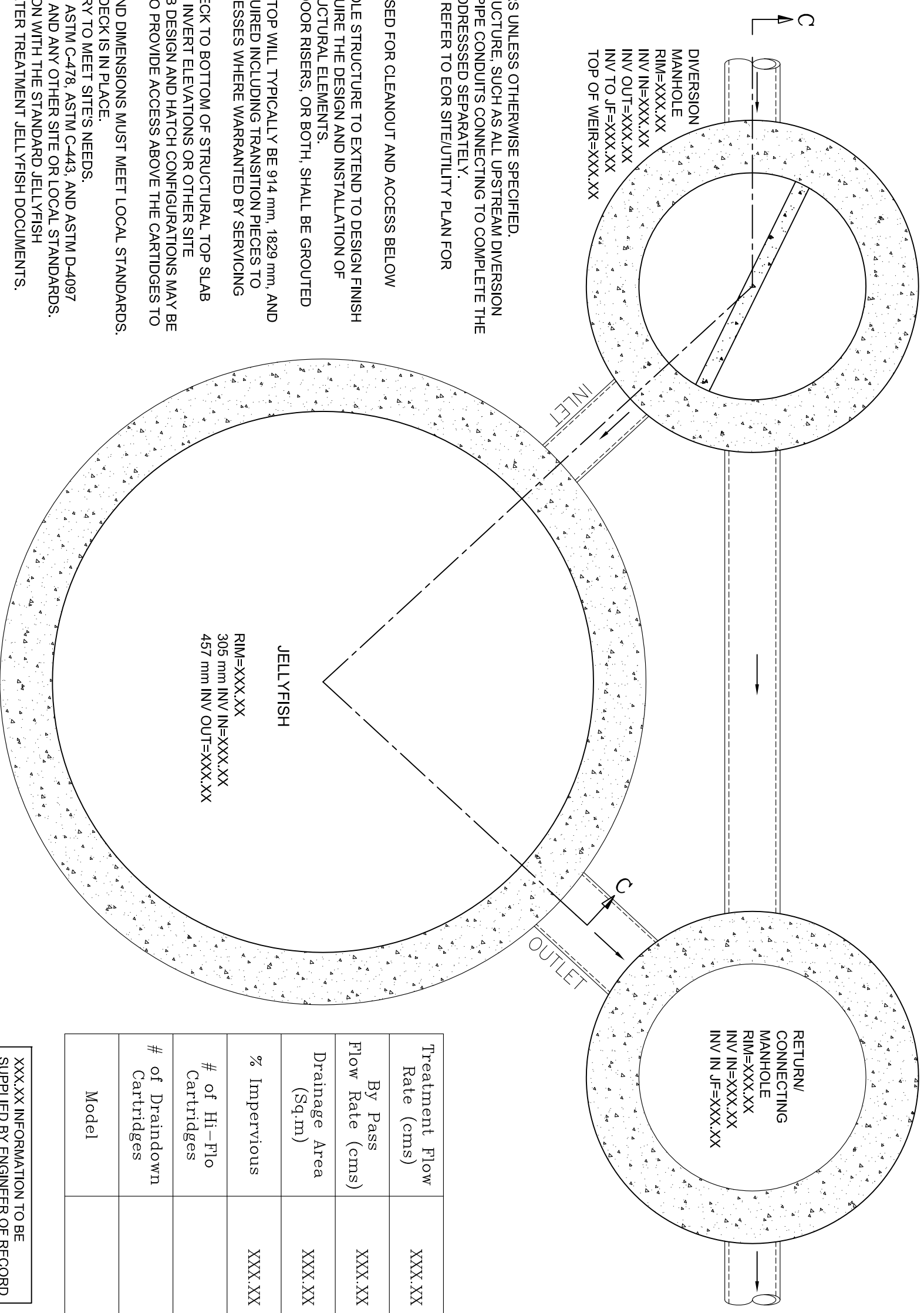


DRAWING NOT TO BE USED FOR CONSTRUCTION



- GENERAL NOTES:**
- ALL DIMENSIONS INDICATED ARE IN MILLIMETERS UNLESS OTHERWISE SPECIFIED.
 - UNLESS OTHERWISE NOTED, BYPASS INFRASTRUCTURE, SUCH AS ALL UPSTREAM DIVERSION STRUCTURES, CONNECTING STRUCTURES, OR PIPE CONDUITS CONNECTING TO COMPLETE THE JELLYFISH SYSTEM SHALL BE PROVIDED AND ADDRESSED SEPARATELY.
 - DRAWING FOR INFORMATION PURPOSES ONLY. REFER TO EOR SITE/UTILITY PLAN FOR STRUCTURE ORIENTATION.

- JELLYFISH STRUCTURE & DESIGN NOTES:**
- 762 mm Ø MAINTENANCE ACCESS WALL TO BE USED FOR CLEANOUT AND ACCESS BELOW CARTRIDGE DECK.
 - CASTINGS OR DOORS OF THE JELLYFISH MANHOLE STRUCTURE TO EXTEND TO DESIGN FINISH GRADE. DEPTHS IN EXCESS OF 3.65 m MAY REQUIRE THE DESIGN AND INSTALLATION OF INTERMEDIATE SAFETY GRATES OR OTHER STRUCTURAL ELEMENTS.
 - CASTINGS AND GRADE RINGS, OR DOORS AND DOOR RISERS, OR BOTH, SHALL BE GROUTED FOR WATERTIGHTNESS.
 - CONCRETE RISER SECTIONS FROM BOTTOM TO TOP WILL TYPICALLY BE 914 mm, 1829 mm, AND 914 mm, WITH OTHER SECTIONS ADDED AS REQUIRED INCLUDING TRANSITION PIECES TO SMALLER DIAMETER RISERS FOR SURFACE ACCESSES WHERE WARRANTED BY SERVICING DEPTH.
 - IF MINIMUM DEPTH FROM TOP OF CARTRIDGE DECK TO BOTTOM OF STRUCTURAL TOP SLAB (1676 mm) CANNOT BE ACHIEVED DUE TO PIPING INVERT ELEVATIONS OR OTHER SITE CONSTRAINTS, ALTERNATIVE CUSTOM TOP SLAB DESIGN AND HATCH CONFIGURATIONS MAY BE AVAILABLE. HATCH DOORS SHOULD BE SIZED TO PROVIDE ACCESS ABOVE THE CARTRIDGES TO ACCOMMODATE MAINTENANCE.
 - STEPS TO BE APPROXIMATELY 330 mm APART AND DIMENSIONS MUST MEET LOCAL STANDARDS.
 - STEPS MUST BE INSTALLED AFTER CARTRIDGE DECK IS IN PLACE.
 - CONFIGURATION OF INLET AND OUTLET CAN VARY TO MEET SITE'S NEEDS.
 - ALL SECTIONS AND PARTS TO MEET OR EXCEED ASTM C-478, ASTM C-443, AND ASTM D-4097 CORRESPONDING TO AASHTO SPECIFICATIONS, AND ANY OTHER SITE OR LOCAL STANDARDS.
 - THIS DRAWING MUST BE VIEWED IN CONJUNCTION WITH THE STANDARD JELLYFISH SPECIFICATION, AND STORMWATER QUALITY FILTER TREATMENT JELLYFISH DOCUMENTS.

SITE PLAN

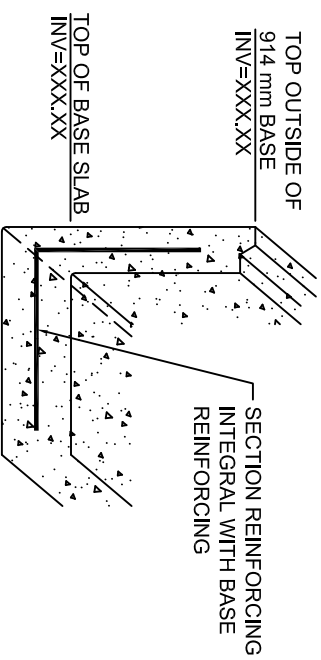
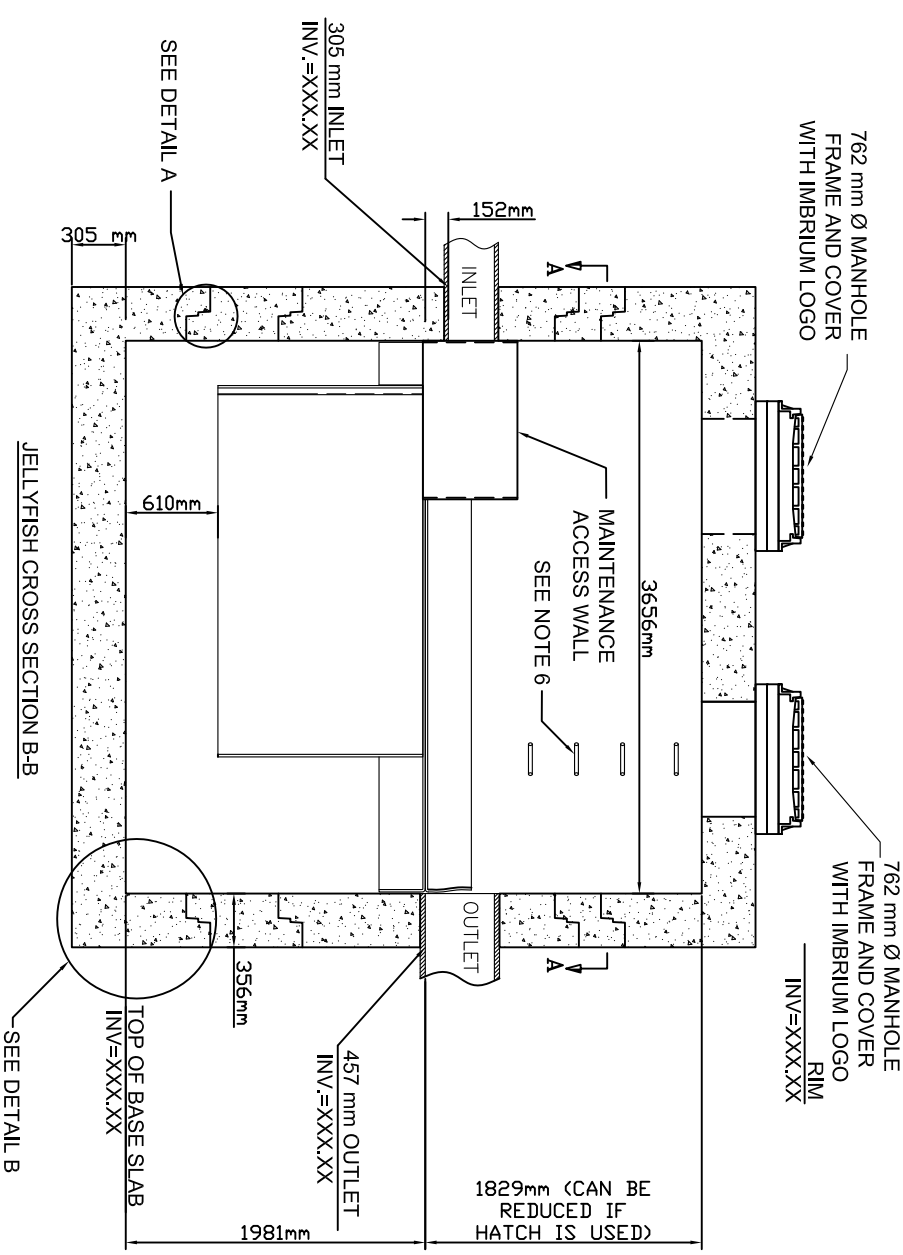
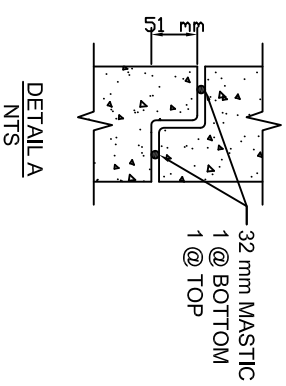
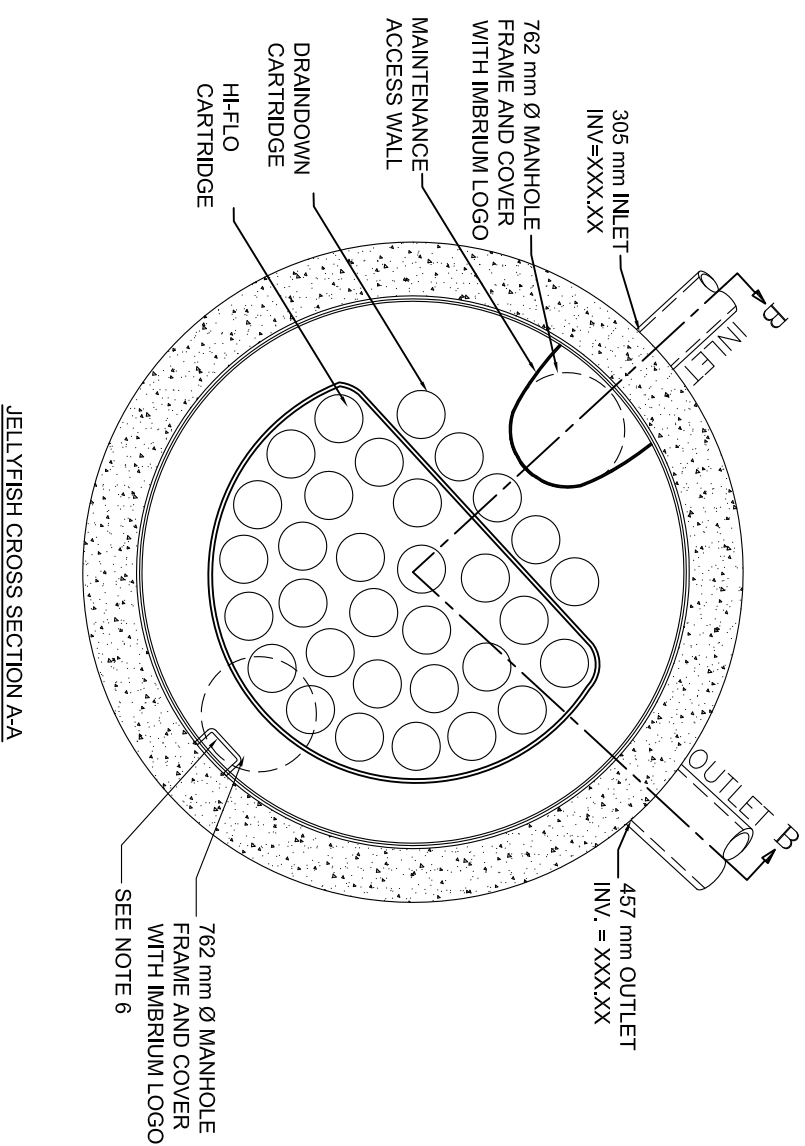
<p>JELLYFISH MODEL JF-12 (METRIC) IMBRIUM SYSTEMS</p> <p style="font-size: small;">www.imbriumsystems.com TOLL FREE: 1-800-656-4801</p>	<p>SCALE 1 : 30</p>																			
<table border="1" style="width: 100%; border-collapse: collapse;"> <thead> <tr> <th>REV</th> <th>Y</th> <th>M</th> <th>D</th> <th>DRN</th> <th>CHK</th> </tr> </thead> <tbody> <tr> <td>0</td> <td>2011</td> <td>03</td> <td>14</td> <td>DES</td> <td>RDG</td> </tr> </tbody> </table>	REV	Y	M	D	DRN	CHK	0	2011	03	14	DES	RDG	<table border="1" style="width: 100%; border-collapse: collapse;"> <tr> <td>FILE: JF12-metric.dwg</td> <td>DRAWN BY: DES</td> </tr> <tr> <td>INITIAL RELEASE</td> <td>DATE: MAR 14, 2011</td> </tr> <tr> <td>DESCRIPTION</td> <td>REV.: 0</td> </tr> </table>	FILE: JF12-metric.dwg	DRAWN BY: DES	INITIAL RELEASE	DATE: MAR 14, 2011	DESCRIPTION	REV.: 0	<p>1 OF 3</p>
REV	Y	M	D	DRN	CHK															
0	2011	03	14	DES	RDG															
FILE: JF12-metric.dwg	DRAWN BY: DES																			
INITIAL RELEASE	DATE: MAR 14, 2011																			
DESCRIPTION	REV.: 0																			

Treatment Flow Rate (cms)	XXX XX
By Pass Flow Rate (cms)	XXX.XX
Drainage Area (Sq.m)	XXX.XX
% Impervious	XXX.XX
# of Hi-Flo Cartridges	
# of Draindown Cartridges	
Model	

XXX.XX INFORMATION TO BE SUPPLIED BY ENGINEER OF RECORD

FOR SITE SPECIFIC DRAWINGS PLEASE CONTACT YOUR LOCAL IMBRIUM SYSTEMS REPRESENTATIVE. SITE SPECIFIC DRAWINGS ARE BASED ON THE BEST AVAILABLE INFORMATION AT THE TIME. SOME FIELD REVISIONS TO THE SYSTEM LOCATION OR CONNECTION PIPING MAY BE NECESSARY BASED ON AVAILABLE SPACE OR SITE CONFIGURATION REVISIONS. ELEVATIONS SHOULD BE MAINTAINED EXCEPT WHERE NOTED ON BYPASS STRUCTURE.

DRAWING NOT TO BE USED FOR CONSTRUCTION



TYPICAL JOINT

XXXXXX INFORMATION TO BE
SUPPLIED BY ENGINEER OF RECORD

FOR SITE SPECIFIC DRAWINGS PLEASE CONTACT YOUR LOCAL IMBRIUM SYSTEMS REPRESENTATIVE. SITE SPECIFIC DRAWINGS ARE BASED ON THE BEST AVAILABLE INFORMATION AT THE TIME. SOME FIELD REVISIONS TO THE SYSTEM LOCATION OR CONNECTION PIPING MAY BE NECESSARY BASED ON AVAILABLE SPACE OR SITE CONFIGURATION REVISIONS. ELEVATIONS SHOULD BE MAINTAINED EXCEPT WHERE NOTED ON BYPASS STRUCTURE.

JELLYFISH MODEL
JF-12 (METRIC)
IMBRIUM SYSTEMS
www.imbriumsystems.com
TOLL FREE: 1-800-656-4801

SCALE 1 : 50

REV	Y	M	D	DRN	CHK
0	2011	03	14	DES	RDG

INITIAL RELEASE	DATE: MAR 14, 2011	Jellyfish
DESCRIPTION	REV.: 0	
		2 OF 3

