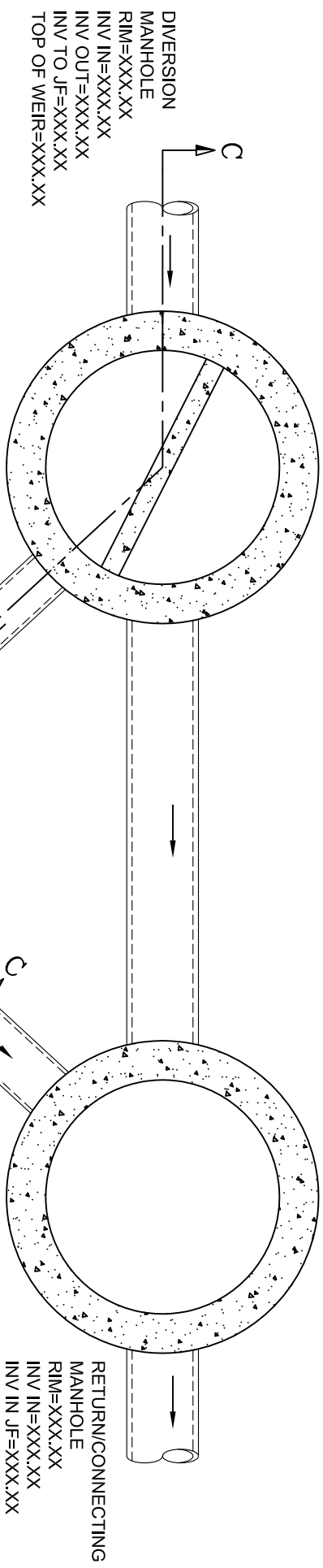


DRAWING NOT TO BE USED FOR CONSTRUCTION



- GENERAL NOTES:**
1. ALL DIMENSIONS INDICATED ARE IN INCHES UNLESS OTHERWISE SPECIFIED.
 2. UNLESS OTHERWISE NOTED, BYPASS INFRASTRUCTURE, SUCH AS ALL UPSTREAM DIVERSION STRUCTURES, CONNECTING STRUCTURES, OR PIPE CONDUITS CONNECTING TO COMPLETE THE JELLYFISH SYSTEM SHALL BE PROVIDED AND ADDRESSED SEPARATELY.
 3. DRAWING FOR INFORMATION PURPOSES ONLY. REFER TO EOR SITE/UTILITY PLAN FOR STRUCTURE ORIENTATION.
 4. ALL SUPPORTING CALCULATIONS REGARDING ONGOING INFILTRATION FUNCTION MUST BE COMPLETED BY THE SITE DESIGN ENGINEER.

JELLYFISH STRUCTURE & DESIGN NOTES:

1. 30" Ø MAINTENANCE ACCESS WALL TO BE USED FOR CLEANOUT AND ACCESS BELOW CARTRIDGE DECK.
2. CASTINGS OR DOORS OF THE JELLYFISH MANHOLE STRUCTURE TO EXTEND TO DESIGN FINISH GRADE. DEPTHS IN EXCESS OF 12 FT MAY REQUIRE THE DESIGN AND INSTALLATION OF INTERMEDIATE SAFETY GRATES OR OTHER STRUCTURAL ELEMENTS.
3. CASTINGS AND GRADE RINGS, OR DOORS AND DOOR RISERS, OR BOTH, SHALL BE GROUTED FOR WATER TIGHTNESS.
4. CONCRETE RISER SECTIONS FROM BOTTOM TO TOP WILL TYPICALLY BE 3 FT, 6 FT, AND 3 FT, WITH OTHER SECTIONS ADDED AS REQUIRED INCLUDING TRANSITION PIECES TO SMALLER DIAMETER RISERS FOR SURFACE ACCESSES WHERE WARRANTED BY SERVICING DEPTH.
5. IF MINIMUM DEPTH FROM TOP OF CARTRIDGE DECK TO BOTTOM OF STRUCTURAL TOP SLAB (5.5 FT) CANNOT BE ACHIEVED DUE TO PIPING INVERT ELEVATIONS OR OTHER SITE CONSTRAINTS, ALTERNATIVE CUSTOM TOP SLAB DESIGN AND HATCH CONFIGURATIONS MAY BE AVAILABLE. HATCH DOORS SHOULD BE SIZED TO PROVIDE ACCESS ABOVE THE CARTRIDGES TO ACCOMMODATE MAINTENANCE.
6. STEPS TO BE APPROXIMATELY 1'1" APART AND DIMENSIONS MUST MEET LOCAL STANDARDS. STEPS MUST BE INSTALLED AFTER CARTRIDGE DECK IS IN PLACE.
7. CONFIGURATION OF INLET AND OUTLET CAN VARY TO MEET SITE'S NEEDS.
8. ALL SECTIONS AND PARTS TO MEET OR EXCEED ASTM C-478, ASTM C-443, AND ASTM D-4097 CORRESPONDING TO AASHTO SPECIFICATIONS, AND ANY OTHER SITE OR LOCAL STANDARDS.
9. THIS DRAWING MUST BE VIEWED IN CONJUNCTION WITH THE STANDARD JELLYFISH SPECIFICATION, AND STORMWATER QUALITY FILTER TREATMENT JELLYFISH DOCUMENTS.

SITE PLAN

RIM=XXX.XX
8" INV IN=XXX.XX
10" INV OUT=XXX.XX

Treatment Flow Rate (cfs)	XXX.XX
By Pass Flow Rate (cfs)	XXX.XX
Drainage Area (acres)	XXX.XX
% Impervious	XXX.XX
# of Hi-Flo Cartridges	
# of Drindown Cartridges	
Model	

XXX.XX INFORMATION TO BE SUPPLIED BY ENGINEER OF RECORD

FOR SITE SPECIFIC DRAWINGS PLEASE CONTACT YOUR LOCAL IMBRIUM SYSTEMS REPRESENTATIVE. SITE SPECIFIC DRAWINGS ARE BASED ON THE BEST AVAILABLE INFORMATION AT THE TIME. SOME FIELD REVISIONS TO THE SYSTEM LOCATION OR CONNECTION PIPING MAY BE NECESSARY BASED ON AVAILABLE SPACE OR SITE CONFIGURATION REVISIONS. ELEVATIONS SHOULD BE MAINTAINED EXCEPT WHERE NOTED ON BYPASS STRUCTURE.

JELLYFISH MODEL
JF6 WITH SUMP DRAIN
IMBRIUM SYSTEMS
www.imbriumsystems.com
TOLL FREE: 1-888-279-8826

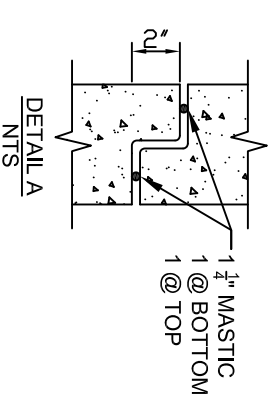
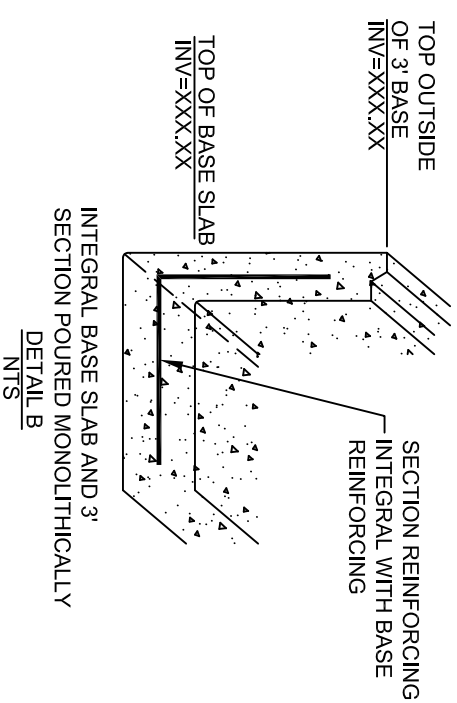
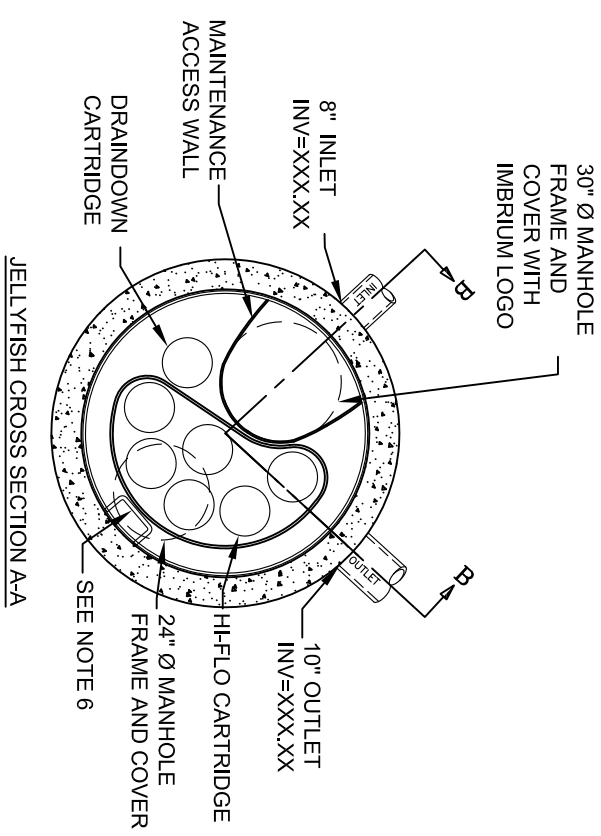
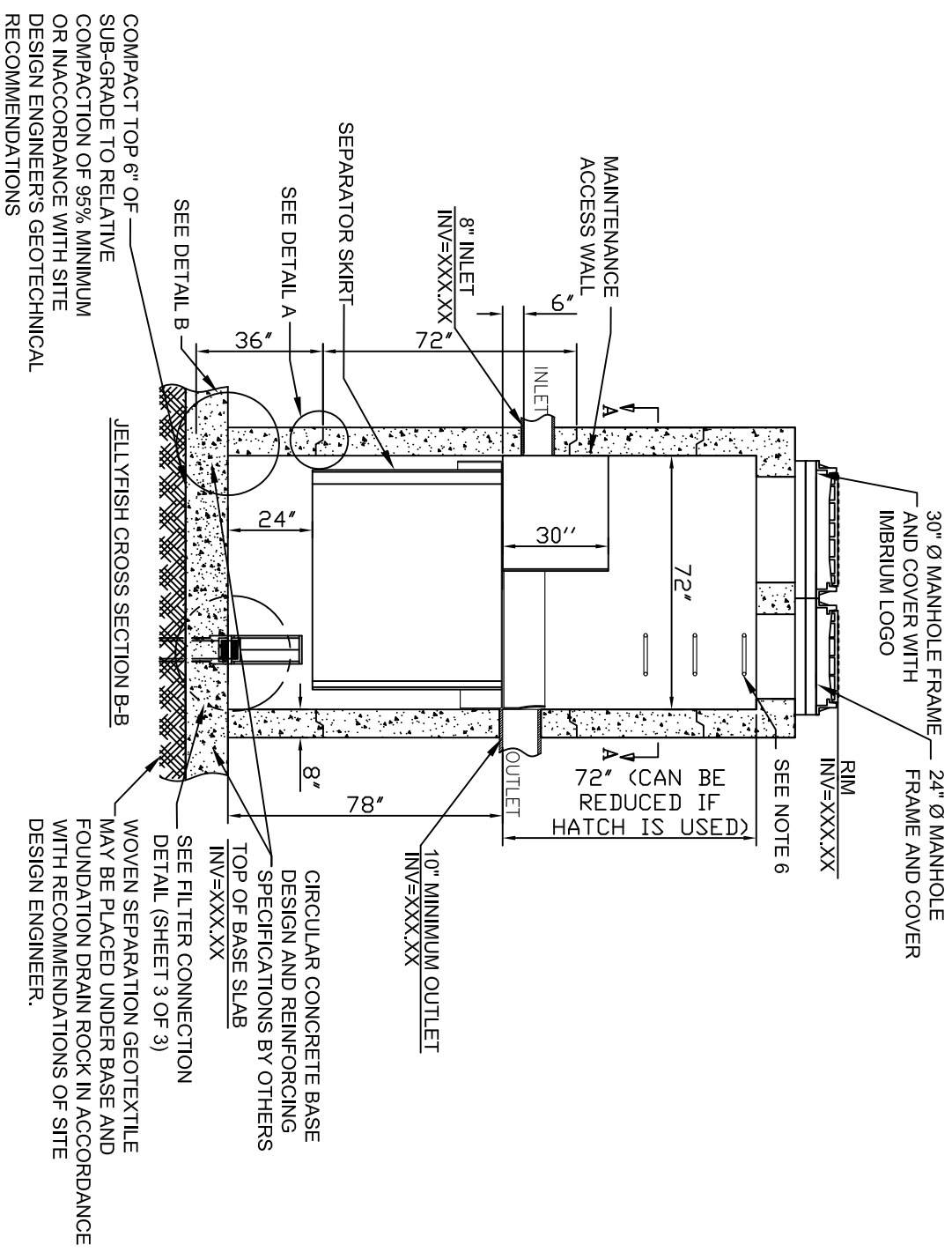
SCALE 3/8" = 1' - 0"

REV	Y	M	D	DRN	CHK
0	2010	11	18	DES	LF

INITIAL RELEASE DESCRIPTION	DATE: NOV 18, 2010	REV.: 1
FILE: JF6 WITH SUMP DRAIN.dwg	DRAWN BY: Debbie Savage	

Jellyfish

DRAWING NOT TO BE USED FOR CONSTRUCTION



XXXX XX INFORMATION TO BE SUPPLIED BY ENGINEER OF RECORD

FOR SITE SPECIFIC DRAWINGS PLEASE CONTACT YOUR LOCAL IMBRIUM SYSTEMS REPRESENTATIVE. SITE SPECIFIC DRAWINGS ARE BASED ON THE BEST AVAILABLE INFORMATION AT THE TIME. SOME FIELD REVISIONS TO THE SYSTEM LOCATION OR CONNECTION PIPING MAY BE NECESSARY BASED ON AVAILABLE SPACE OR SITE CONFIGURATION REVISIONS. ELEVATIONS SHOULD BE MAINTAINED EXCEPT WHERE NOTED ON BYPASS STRUCTURE.

JELLYFISH MODEL
JF6 WITH SUMP DRAIN
IMBRIUM SYSTEMS
www.imbriumsystems.com
TOLL FREE: 1-888-279-8826

SCALE 1/4" = 1' - 0"

REV	Y	M	D	DRN	CHK
0	2010	11	18	DES	LF

FILE: JF6 WITH SUMP DRAIN.dwg	Jellyfish
DRAWN BY: Debbie Savage	
DATE: NOV 18, 2010	
INITIAL RELEASE	DATE: NOV 18, 2010
DESCRIPTION	REV.: 1

