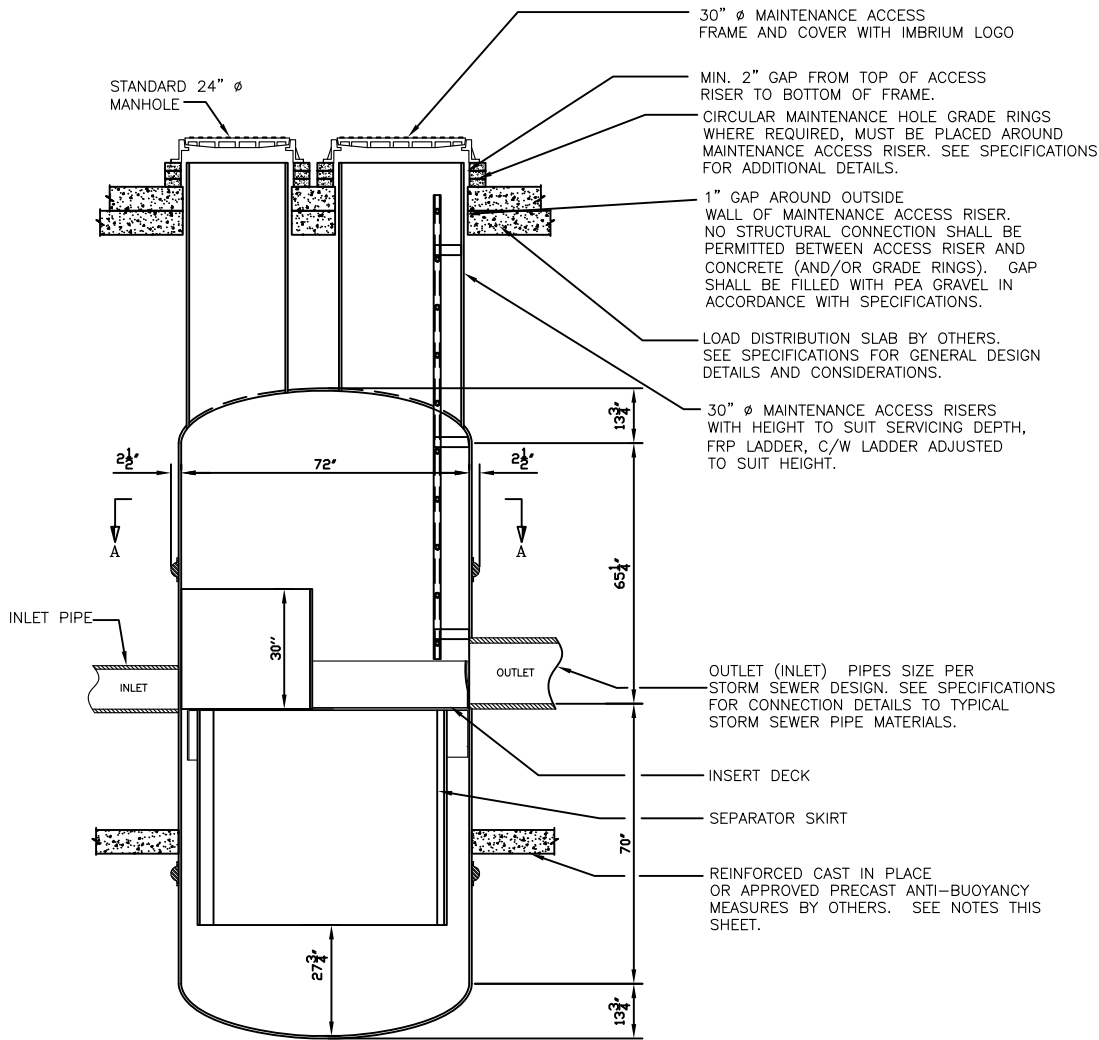


Section View A-A

NOTES:

1. ALL DIMENSIONS IN INCHES.
2. WALL THICKNESS FOR ALL FIBER REINFORCED POLYMER (FRP) VESSEL WALL COMPONENTS VARY FROM 1/4" TO 3/8" IN ACCORDANCE WITH STRUCTURAL REQUIREMENTS. FRP THICKNESS REQUIREMENTS SHALL BE INDICATED ON PROJECT SHOP DRAWINGS.
3. ALL FRP DOME ELEMENTS CONFORM TO ASME SPECIFICATIONS. SEE SHOP DRAWINGS FOR ADDITIONAL DETAILS.
4. SIZING SHALL CONFORM TO THE MOST RECENT TECHNICAL INFORMATION AVAILABLE FROM IMBRIUM SYSTEMS AT THE TIME OF PROJECT SHOP DRAWINGS.
5. REQUIREMENTS FOR ANTI-BUOYANCY MEASURES SHALL BE DETERMINED BY SPECIFIER TO SUIT SITE CONDITIONS AND IN ACCORDANCE WITH MOST RECENT SPECIFICATIONS AND SHOP DRAWINGS.



Section View B-B

DRAWING NOT TO BE USED FOR CONSTRUCTION

THE JELLYFISH SYSTEM IS PROTECTED BY ONE OR MORE OF THE FOLLOWING PATENTS:
PATENT PENDING

FIBERGLASS JELLYFISH MODEL JF6-F	SCALE: 1/4" = 1' - 0"						 IMBRIUM SYSTEMS INC IMBRIUM INTERNATIONAL LTD www.imbriumsistemas.com Canada: 1-800-565-4801 International: +1-416-960-9900		
	FILE: JF6F.dwg								
	02	11	02	22	LML	BG		REVISED INTERNAL COMPONENTS	DRAWN BY: FM
	01	09	06	26	FM	SB		INITIAL RELEASE	DATE: JUNE 26, 2009
REV	Y	M	D	DRN	CHK	DESCRIPTION	REV.: 02		