

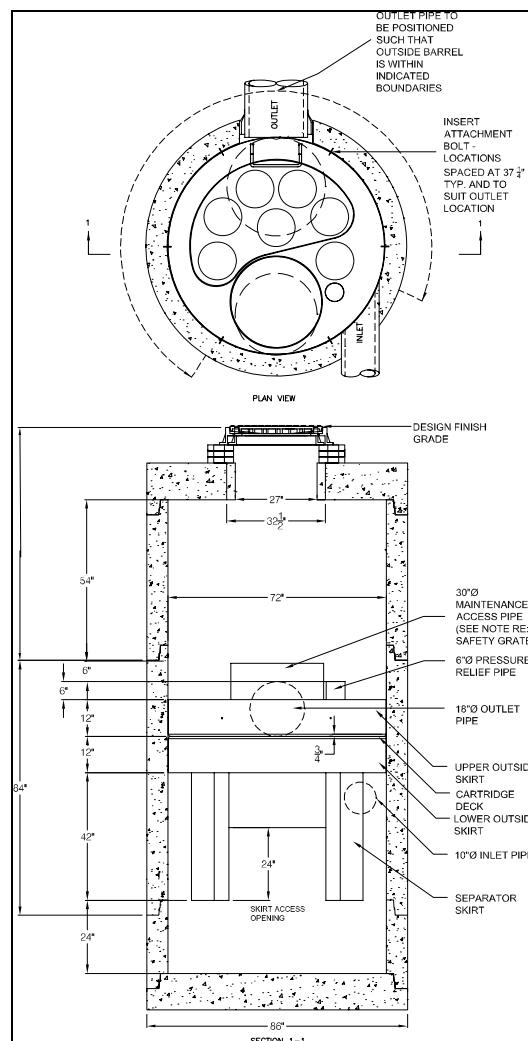
Jellyfish™ Configurations

The Jellyfish filter system can be easily configured to meet your site requirements.

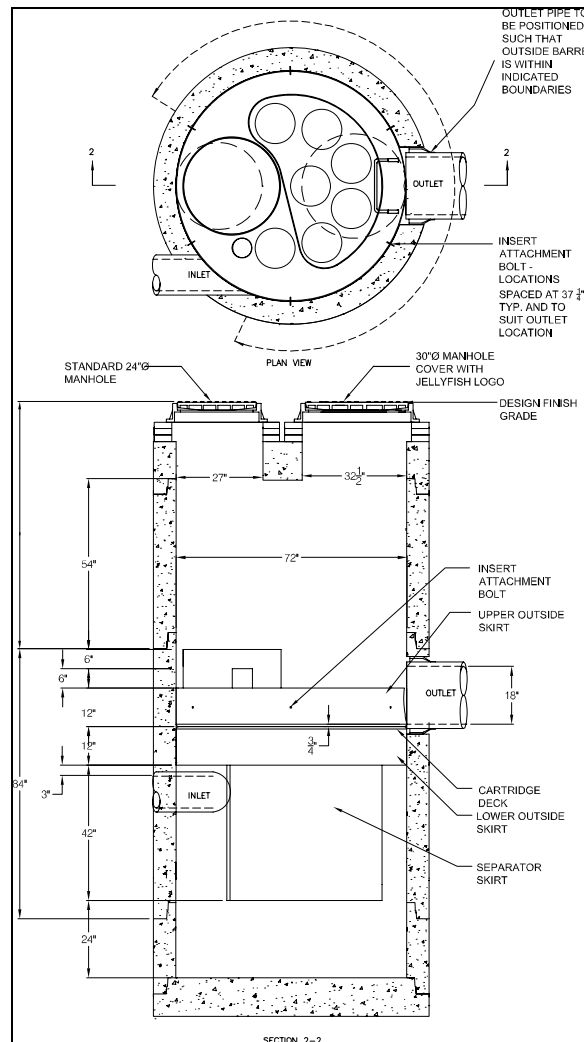
Jellyfish Filter System Configurations and Materials of Construction

The Jellyfish filter system will be available as a manhole configuration in 5 different sizes. Options for materials of construction include precast concrete and fiberglass reinforced plastic (FRP).

Jellyfish filter system: 6-ft diameter configuration Front view



Jellyfish filter system: 6-ft diameter configuration Side view



5 Manhole Configurations:

- JF4 4-ft diameter
- JF6 6-ft diameter
- JF8 8-ft diameter
- JF10 10-ft diameter
- JF12 12-ft diameter

Rectangular Vessel Configurations

Jellyfish will also be available in a range of customized rectangular configurations. Please contact Imbrium Systems directly to discuss your requirements.

Inlet and Outlet Pipes

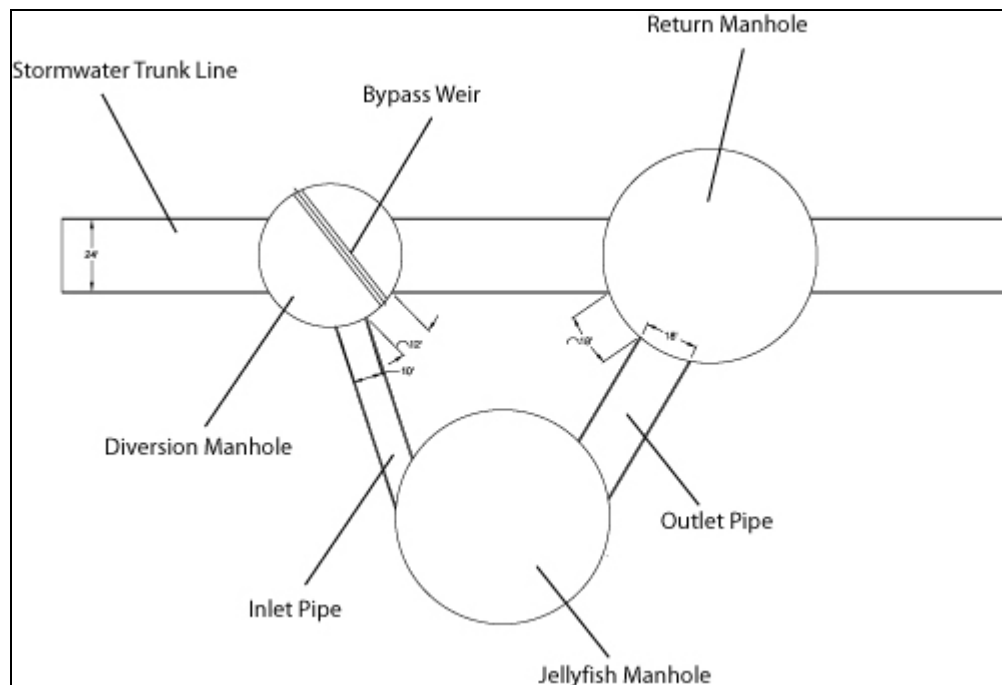
The Jellyfish filter system typically utilizes an in-line influent pipe.

The placement of outlet pipe relative to inlet pipe is flexible. This provides for greater compatibility of the Jellyfish with other site infrastructure.

External Bypass

An upstream external bypass is typically used to route excessive flows around the Jellyfish system, as depicted in the bypass and diversion manhole schematics below. Bypass design will also allow for configuration of two or more Jellyfish structures to work in parallel.

Typical Bypass Configuration



For more information, please contact an Imbrium Systems representative at:
1(888) 279 8826 (USA) | 1 (800) 565 4801 (Canada) | +1 416 960 9900 (International)