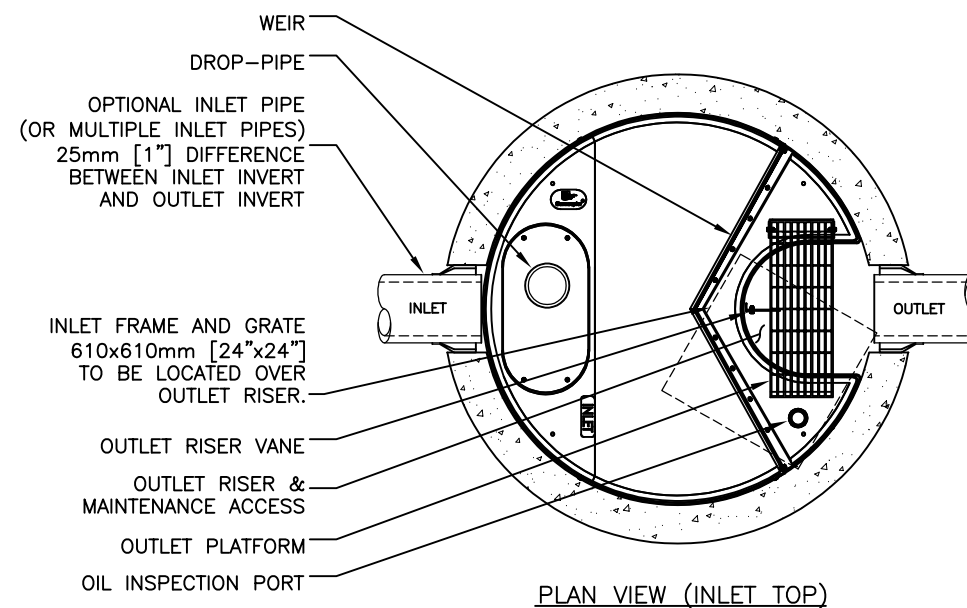


FOR SITE SPECIFIC DRAWINGS PLEASE CONTACT YOUR LOCAL STORMCEPTOR REPRESENTATIVE. SITE SPECIFIC DRAWINGS ARE BASED ON THE BEST AVAILABLE INFORMATION AT THE TIME. SOME FIELD REVISIONS TO THE SYSTEM LOCATION OR CONNECTION PIPING MAY BE NECESSARY BASED ON AVAILABLE SPACE OR SITE CONFIGURATION REVISIONS. ELEVATIONS SHOULD BE MAINTAINED EXCEPT WHERE NOTED ON BYPASS STRUCTURE (IF REQUIRED).

- A. ANY SUB-BASE, BACKFILL DEPTH, AND/OR ANTI-FLOTATION PROVISIONS ARE SITE-SPECIFIC DESIGN CONSIDERATIONS AND SHALL BE SPECIFIED BY ENGINEER OF RECORD.
- B. CONTRACTOR TO PROVIDE EQUIPMENT WITH SUFFICIENT LIFTING AND REACH CAPACITY TO LIFT AND SET THE STRUCTURE (LIFTING CLUTCHES PROVIDED)
- C. CONTRACTOR WILL INSTALL AND LEVEL THE STRUCTURE, SEALING THE JOINTS, LINE ENTRY AND EXIT POINTS (NON-SHRINK GROUT WITH APPROVED WATERSTOP OR FLEXIBLE BOOT)
- D. CONTRACTOR TO TAKE APPROPRIATE MEASURES TO PROTECT THE DEVICE FROM CONSTRUCTION-RELATED EROSION RUNOFF.
- E. DEVICE ACTIVATION, BY CONTRACTOR, SHALL OCCUR ONLY AFTER SITE HAS BEEN STABILIZED AND THE STORMCEPTOR UNIT IS CLEAN AND FREE OF DEBRIS.



SITE SPECIFIC DATA REQUIREMENTS					
STORMCEPTOR MODEL			EF5		
STRUCTURE ID					*
WATER QUALITY FLOW RATE (L/s)					*
PEAK FLOW RATE (L/s)					*
RETURN PERIOD OF PEAK FLOW (yrs)					*
DRAINAGE AREA (HA)					*
DRAINAGE AREA IMPERVIOUSNESS (%)					*
PIPE DATA:	I.E.	MAT'L	DIA	SLOPE %	HGL
INLET #1	*	*	*	*	*
INLET #2	*	*	*	*	*
OUTLET	*	*	*	*	*
* PER ENGINEER OF RECORD					

The design and information shown on this drawing is provided as a service to the project owner, engineer and contractor by Inbrium Systems ("Inbrium"). Inbrium Systems and its employees shall not be held liable, reproduced or modified in any manner without the prior written consent of Inbrium. Failure to comply with the terms and conditions of this drawing constitutes an assumption of liability and responsibility for such use. Inbrium disclaims any user's own risk and Inbrium expressly disclaims any liability or responsibility for such use.

Discrepancies between the supplied information upon which this drawing is based and actual field conditions are encountered as site work progresses, these discrepancies must be reported to Inbrium immediately for re-evaluation of the design. Inbrium accepts no liability for designs based on missing, incomplete or inaccurate information supplied by others.

0	08/22/24	INITIAL RELEASE	EC
####	####	####	####
####	####	####	####
####	####	####	####
####	####	####	####
MARK	DATE	REVISION DESCRIPTION	BY

Stormceptor® EF

SCALE = NTS



DATE: 8/22/2024	
DESIGNED: JSK	DRAWN: EC
CHECKED: BSF	APPROVED:
PROJECT No.: EF5	SEQUENCE No.: *
SHEET: 1 OF 1	

STANDARD DETAIL
NOT FOR CONSTRUCTION